

AlphaEclipse™ StreetSmart™ 17mm Series Outdoor LED Display

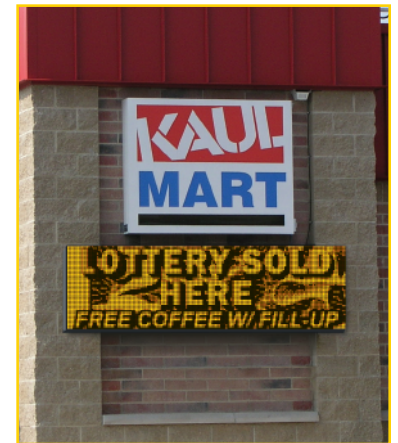


StreetSmart™ 17mm Series

The AlphaEclipse StreetSmart 17mm series is specifically designed to provide highly visible outdoor advertising along any local city street. 5-inch to 22-inch letters, and high display resolution make it ideal for monument applications, lower pylon, and slower city traffic volumes. Brilliant red or amber LEDs with 256-shades/grayscaleing will grab attention and bring more drive-by customers into your business.

Advertise your products and services at a moment's notice to dramatically increase your company sales and profits like no other advertising medium can. Become a recognized landmark in your local community. Superior PureColor™ exposed LED design provides you with a product that is brighter, and has better readability to impact your drive-by audience with dazzling, professional advertising messages that cannot be ignored.

- *Versatile* – instantly change your advertising messages from the convenience of your PC
- *Economical* – will help you to minimize wasted advertising dollars that don't reach your target market
- *Efficient* – energy smart LED technology uses minimal energy, and requires minimal maintenance
- *Powerful & Profitable* – creates new sales and profits like no other advertising can, and is the most effective on-premise outdoor advertising medium available today



Standard Features

- Includes easy-to-use AlphaNet™ software for sign programming
- Instant display or calendar scheduling of your messages
- Display graphics/animations import/display BMP, GIF files
- Many sizes from 11" x 44" to 5' x 14'
- 256 shades of red or amber
- PureColor™ exposed LED design eliminates front lens glare
- Five-year limited factory depot warranty
- Optional high speed wired or wireless Ethernet control
- 100,000 hour selected grades of Agilent LEDs
- Protector™ case eliminates external contaminants
- SmartPanel™ LED display with unique door design for easy front access to all components

AlphaEclipse™ StreetSmart™ 17mm Series Specifications

Rows	Columns	Case H" x W"	Char. Height Per Line	4" Char's Per line	Max Current (Amps)	Weight	Rows	Columns	Case H" x W"	Char Height Per line	4" Char's Per line	Max Current (Amps)	Weight
16	96	11" x 5'6"	11"/1	16/2	2.76	69.3 lbs.	64	96	3'8" x 5'6"	21"/1	16/8	11.06	164.1 lbs.
16	128	11" x 7'4"	7"/1	21/2	3.69	93.2 lbs.	64	128	3'8" x 7'4"	14"/3	21/8	14.75	194.5 lbs.
16	160	11" x 9'2"	4.9"/2	26/2	4.61	109 lbs.	64	160	3'8" x 9'2"	10.5"/4	26/8	18.43	246 lbs.
16	192	11" x 11'0"	3.5"/2	32/2	5.53	124.7 lbs.	64	192	3'8" x 11'0"	7"/5 4.9"/8	32/8	22.12	498 lbs.
32	96	1'10" x 5'6"	22.4"/1	16/4	5.53	91.7 lbs.	80	96	4'7" x 5'6"	21"/2	16/10	13.82	201.8 lbs.
32	128	1'10" x 7'4"	14"/1	21/4	7.37	110.5 lbs.	80	128	4'7" x 7'4"	14"/3	21/10	18.43	248.6 lbs.
32	160	1'10" x 9'2"	10.5"/2	26/4	9.22	140 lbs.	80	160	4'7" x 9'2"	10.5"/5	26/10	23.04	513 lbs.
32	192	1'10" x 11'0"	7"/3 4.9"/4 3.5"/5	32/4	11.06	158.7 lbs.	80	192	4'7" x 11'0"	7"/7 4.9"/10 3.5"/13	32/10	27.65	586 lbs.
48	96	2'9" x 5'6"	21"/1	16/6	8.29	137.9 lbs.	96	256	5'6" x 14'8"		42/12	17/230V	1017 lbs.
48	128	2'9" x 7'4"	14"/2	21/6	11.06	173.2 lbs.							
48	160	2'9" x 9'2"	10.5"/3	26/6	13.82	211.1 lbs.							
48	192	2'9" x 11'0"	7"/4 4.9"/6 3.5"/8	32/6	16.59	238.2 lbs.							

NOTE: Many more sizes are available, up to 5'7" x 15' (96 rows x 256 columns).
 Approximate dimensions, power and weight – call your Adaptive dealer for architectural drawings.
 Due to continuing product innovations, all specifications are subject to change without notice.

Pixel (LED) Color:	Red or amber, 256 shades (grayscale)
Pixel Pitch:	17.5mm / .70", single LED
Pixel Luminance:	Viewable in direct sunlight
Viewability:	90° or 125°
Character Set:	International character set, block (sans serif), decorative (serif), upper/lower case, slim, wide, double wide, and shadow
Message Capacity:	95 different messages can be stored and scheduled to be displayed according to time and date.
Message Presentation:	–27 unique presentation styles –Automatic centering in any mode –User programmable logos and graphics –Programmable hold times up to 6 minutes –Calendar scheduling
User Animations:	BMP and GIF file formats
Temperature Accuracy:	± 1° F Typical (optional temperature probe)
Clock/Date:	Time in 12/24-hour formats, date in multiple formats
Battery:	Lithium battery for time/date/message retention during power interruptions for at least 1 year
Serial Communication Interface:	Standard RS232 and RS485 Options: On site wireless, telephone or fiberoptic modem – factory tested, configured and installed inside the AlphaEclipse case.

Special Features:	<ul style="list-style-type: none"> –Sealed enclosure design prevents external contamination penetration and filter maintenance –Industry standard 64MB compact flash memory for message storage –Comprehensive remote diagnostic program –External temperature probe (optional) –Internal AC power switch for servicing –Light colored case, designed to limit solar heat rise internally –Automatic thermal protection –Auto night time dimming (8 levels)
Communications:	Alpha® Communication Protocol
Power:	115/230 VAC ± 10% - 50/60 Hz single phase
Case Material:	UL50 Type 3R, IP44 aluminum cabinet
Limited Warranty:	Five-year limited factory depot parts warranty
Agency Approvals:	FCC Part 15, Class A, ANSI/UL 60950, CAN/CSA C22.2 60950-1-03 C-ETL-US listing mark and CE Marking
Operating Temperature:	-40° to 122° F / -40° to 50° C
Mounting:	Steel mounting angle, design facilitates welding, bolting, or riveting techniques.
Module/Case Dimensions:	<ul style="list-style-type: none"> –Front access to all components –Cantilever hinged door for ease of service –10" deep including steel mounting brackets <p>*NOTE: Many more sizes available to 5'7" x 15' – consult your Adaptive dealer.</p>