

Quick Start

Getting started with AlphaNet™

Get your sign up and running fast!

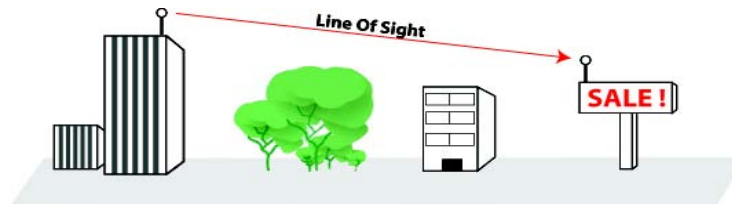
Start here

1 Connect

Connect the RS232 cable to the transmitter and a COM port on your computer.



For most effective communications, there must be a clear *visual* line of sight between the transmitter and receiver antennas.



2 Insert

With the computer on, insert the AlphaNet™ CD into your CD drive.



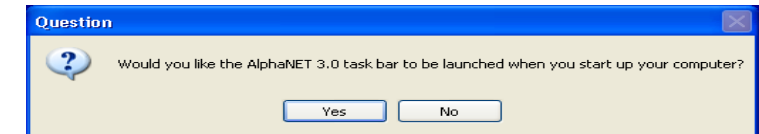
If installation does not start automatically:

- Select **Start > Run**.
- Type `D: /setup` (use the correct letter for your CD drive if not *D*).
- Click **OK**.

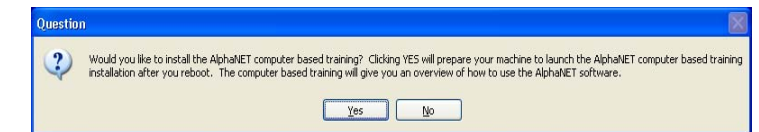
3 Install

Follow the instructions as the software takes you step-by-step through installation.

Special features to look for . . .



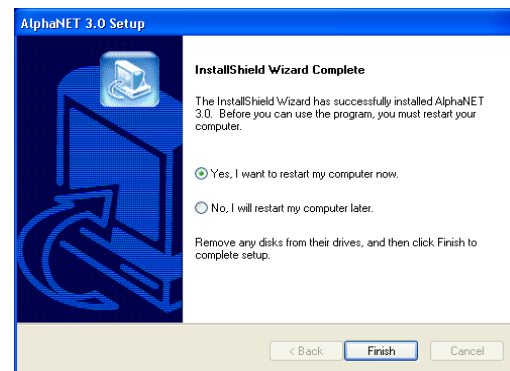
Click **Yes**.



Click **Yes**.

4 Reboot

Reboot your computer when prompted.



Important: If the Site Setup Wizard appears after your computer reboots:

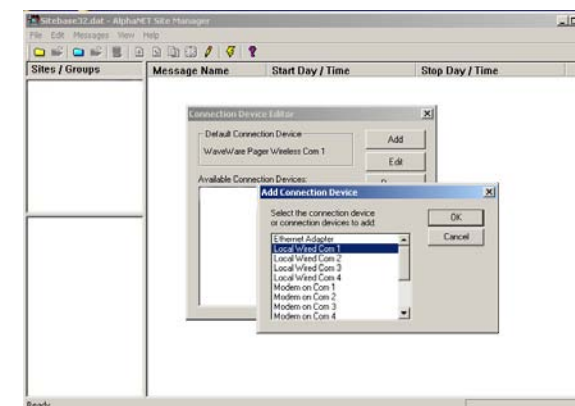
- Select **TCP/IP** when asked how you will communicate with your sign.
- Select your sign model from the list, including number of columns, number of rows, and single or full color.

5 Select

Click the Site Manager button to select a connection device.

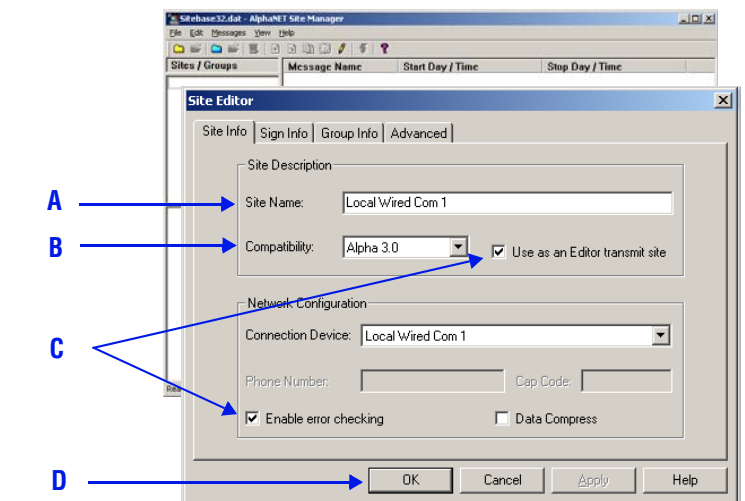


- Select **Edit > Connection Device > Add**.
- Choose **Local Wired Com 1** and click **OK**.



6 Assign

Assign a site that uses the Waveware connection device. Select **File > New Site**.



- A—Name the new site.
- B—Choose Alpha 3.0 for StreetSmart and RoadStar signs.
- C—Check these two boxes.
- D—Click **OK**.

System requirements

Windows

- 95, 98, 2000, NT Workstation, ME, XP or Vista software
- Processor requirements appropriate to selected operating system
- 16 MB RAM
- 10 MB of hard disk space
- CD drive
- RS232 (serial port) or LAN access
- Works with Alpha displays

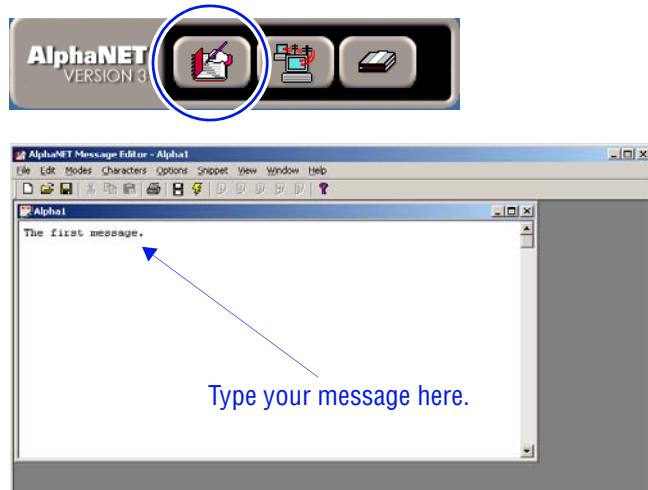
Macintosh

- Macintosh G4 computer
- Virtual PC for Macintosh

Creating and sending a message

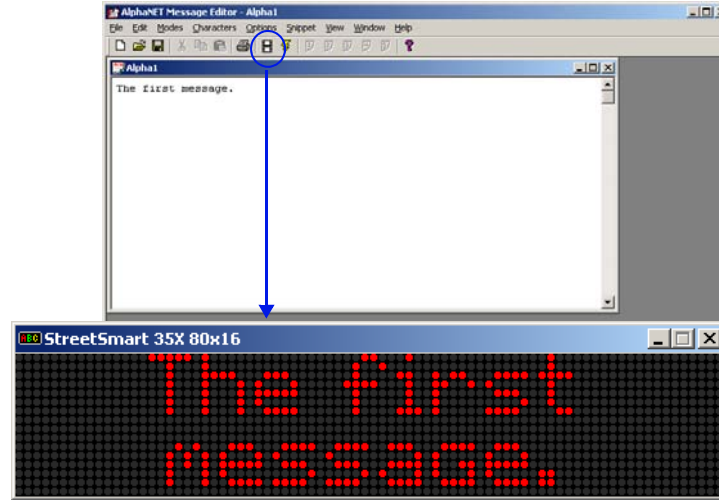
1 Create

Click the Message Editor button and type your first message.



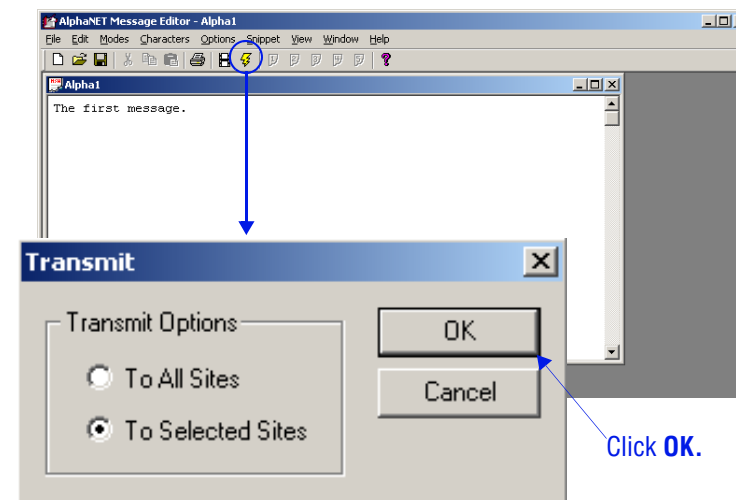
2 Test

Click the Simulate button to see how your message will look.

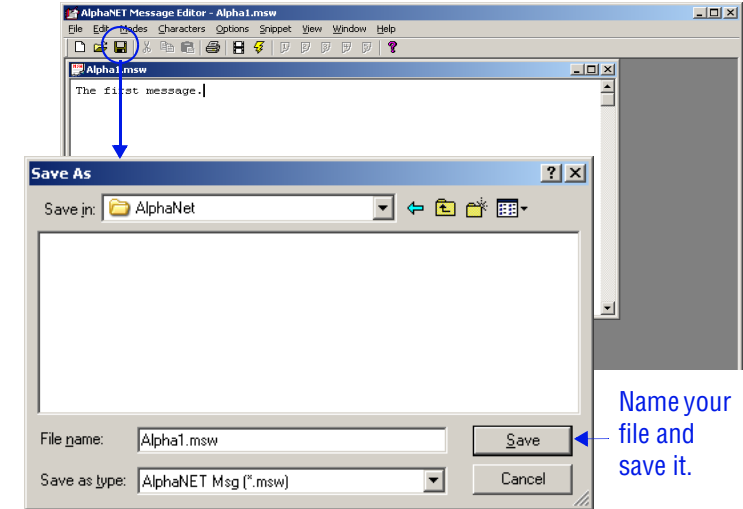


3 Send, or → 4 Save

To send your message, click the Transmit button on the toolbar.



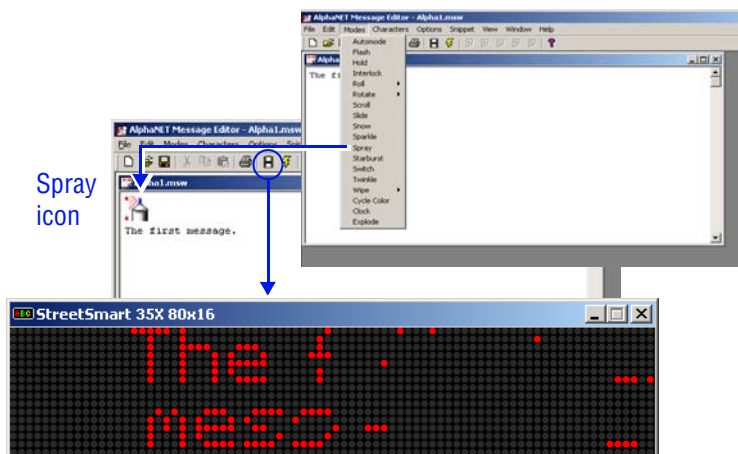
Save your message or group of messages in an AlphaNet™ folder on your computer.



Exploring modes, options, and schedules

1 Modes

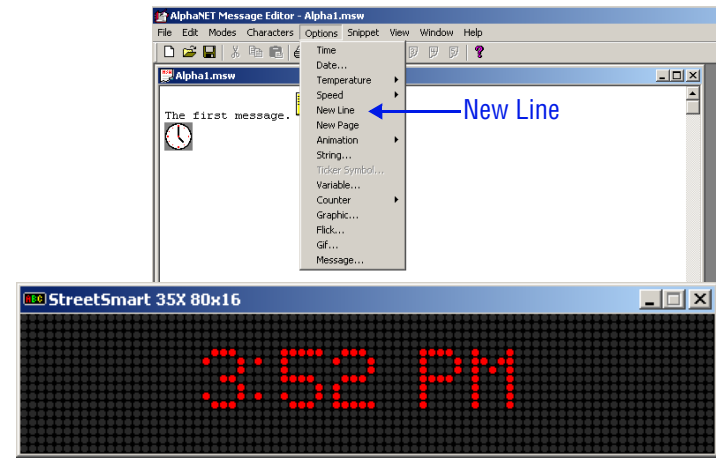
Modes let you control the way your message appears. ("Spray" mode shown below.)



Tip: Place the cursor before the message and insert the mode. Click the Simulate button to view.

2 Options

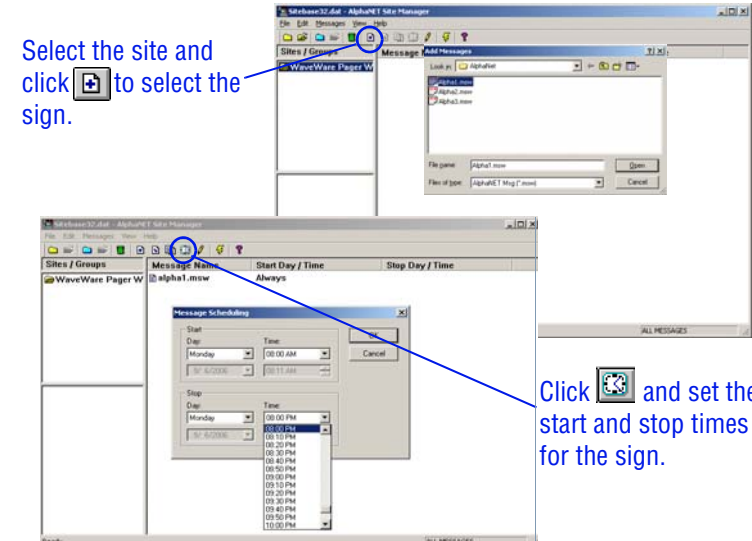
You can add the date, time, temperature, and other displays using Options.



Tip: Insert "New Line" between your message and the option. Click the Simulate button to view.

3 Schedules

Schedule your messages to appear at a specific time of day.



4 Send

Select the signs where you want the message sent and click the transmit button.

